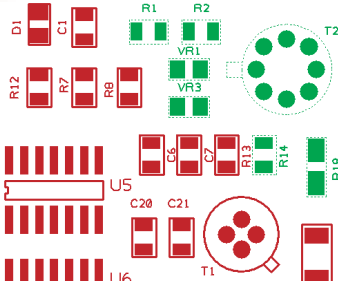


Component Variant Spreadsheet

The new Component Variant spreadsheet enables you to edit variant related component information in an easy-to-read and edit spreadsheet. Each component is represented in the spreadsheet as it would be in the Properties dialog, but this dialog allows fast transition between components where multiple items need to be managed.



Design components included in Variants are presented in the Spreadsheet editor for clear viewing and editing

Name	Part Name	UK*	Northern Europe	USA	Asia	Africa	South America
C1	C						
C2	CP3			C Polarised	C Polarised		
CONN1	DIN41612-PLG-64		DIN41612-SKT-64				
PL1	3MP						
PL2	3MP						
PL3	26WDP						
PL4	26WDP						
PL5	3MP						
G1	BC184L						
G2	BC184L						
R1	R	R 0.063W S			R 0.063W S R 0.063W SM		
R2	R						
R3	R						
R4	R						
R5	R8C				430R-101		
R6	R						
R7	R	R 0.063W S			R 0.063W S R 0.063W SM		
R8	R	R 0.063W S			R 0.063W S R 0.063W SM		
R9	R	R 0.063W S			R 0.063W S R 0.063W SM		
R10	R						
R11	R						
SW1	SPDT						
U1	74LS251						
U2	74LS251						

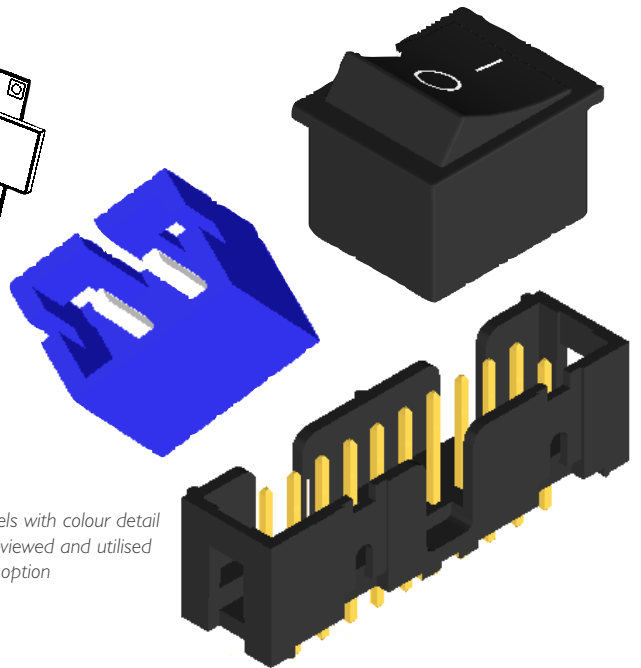
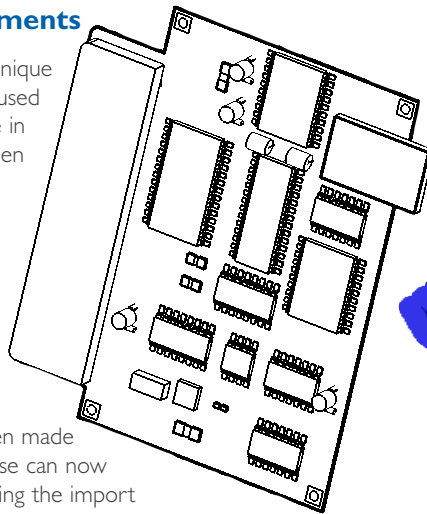
Variant	Fitted	Part Name	Database	Shared Identifier	Attributes	Variant	Part Description
				Attributes	Instance	Value	
UK	<input checked="" type="checkbox"/>	R 0.063W SM	a	a	a	1K	Thick Film Surface Resistor
Northern E	<input checked="" type="checkbox"/>	R	b	b	b	1k	Resistor
USA	<input checked="" type="checkbox"/>	R	c	a	a	1K	Thick Film Surface Resistor
Asia	<input checked="" type="checkbox"/>	R 0.063W SM	d	a	a	1K	Thick Film Surface Resistor
Africa	<input checked="" type="checkbox"/>	R 0.063W SM	e	a	a	1K	Thick Film Surface Resistor
South Ame	<input checked="" type="checkbox"/>	R	b	b	b	1k	Resistor

STEP Interface Improvements

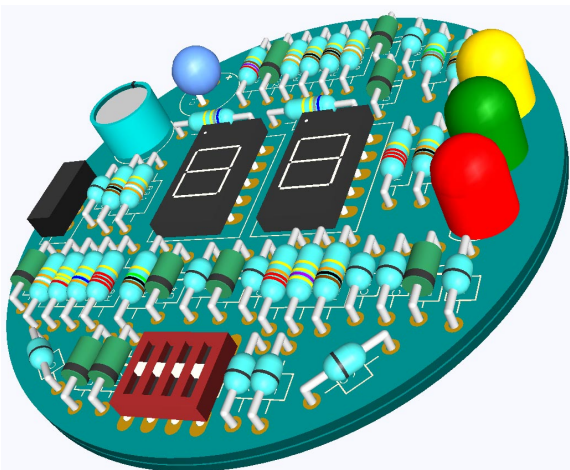
Where STEP models incorporate unique colours, these colours will now be used when importing the models for use in the built-in STEP previewer and when exporting to a STEP file.

During the export of STEP files, Component identifier tags are added to the file, STEP export now includes Component Names and Part Names for downstream use in the mechanical CAD system.

Where positional changes have been made in the mechanical CAD system, these can now be annotated back into the PCB using the import of STEP component positional changes option.



STEP models with colour detail can be Previewed and utilised within this option



New package shapes enable more detail to be added

Enhanced 3D Viewer Package Shapes

For use with the Pulsonix 3D Viewer, new 3D Package Shapes are included for BEAD, MELF, DILSwitch and LEDdisplay. Where Axial components are created in the Package Editor, this type can now be defined using rounded ends (as well as square ends). In addition to new shapes, colour-coded bands on components has been enabled. This allows component values to be translated into true colour coding on the package for items such as resistors, capacitors and diodes.

When using the 3D Viewer, you can now save the image to a file for inclusion into your documentation.

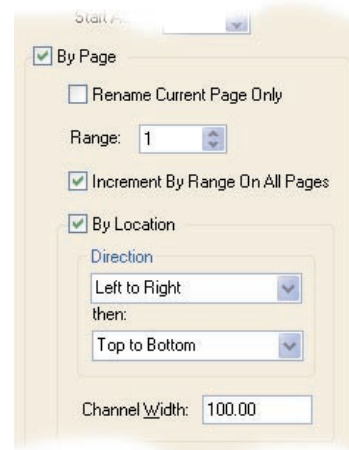
Pulsonix Version 7.5 (cont'd)

Auto-Rename By Location in Schematic Editor

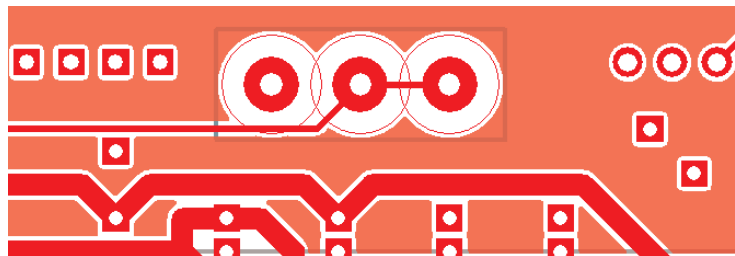
The Auto-Rename feature now supports rename By Location for a Schematic design for Components or Test Points. This option can be used on a By Page basis, this enables you to produce a name sequence based on the position of these items on the schematic pages. This style of rename is commonly used for the service engineers convenience when attempting to diagnose problems using a schematic diagram as reference.

Pad Style Spacing Shapes

With the expansion of the Pad Styles functionality, you can now add special spacing shapes as layer exceptions. This allows you pad level spacing rules but with the added benefit of being able to create your own pad shapes for use on an existing pad. All ancillary options will use this additional capability, options such as DRC, Copper Pour etc. You may for example, add a spacing shape rule to a surface mount pad for special allowance of component slippage during physical manufacturing. This new functionality is also available for user defined pad shapes.

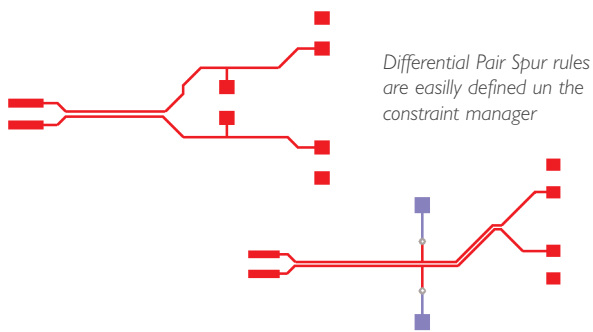


Spacing shapes on pads and vias allow additional 'local' clearances to be defined to critical areas of interest



Interactive High Speed (Cost option) - Differential Pairs - Spurs Allowed

With the addition of the new Allow Track Spurs rules in the differential pairs constraint rules manager, greater control has been provided when designing complex PCBs. This new rule is checked when running Design Rules Checks and violations reported.



Differential Pair Spur rules are easily defined in the constraint manager

Swap Component Positions

A valuable time-saving feature where two components can be swapped using their exact positions. This enables fast repositioning and visual connection length shortening on-the-fly during design. The component rotation and side are adhered to during the swap, and there is an additional feature available to allow routed components to be swapped.

Additional Features Summary

- Assign shortcut keys for Change Layer to specific layers
- Snap Cursor to Grid
- Gerber verification plot to PDF
- Local Pin Types
- Scaling of DXF files during Import
- Align DXF to 0,0 during Import
- Insert Multiple Connector Pins
- 3D Viewer - Layer Type choice for component body
- Component push uses accurate shapes
- New commands in Report Maker
- Delete segment of Schematic connection
- Suppress pads on powerplanes
- Ariadne Import (Cost Option)
- Plus many more new additional features and enhancements

Pulsonix 20 Miller Court, Severn Drive, Tewkesbury, Glos, GL20 8DN, UK
Tel: +44 (0) 1684 296 551 Fax: +44 (0)1684 296 515
Email: sales@pulsonix.com Web: www.pulsonix.com